

URBAN ASIA NE 2020

Seung Ra, RA, NCARB
Associate Professor

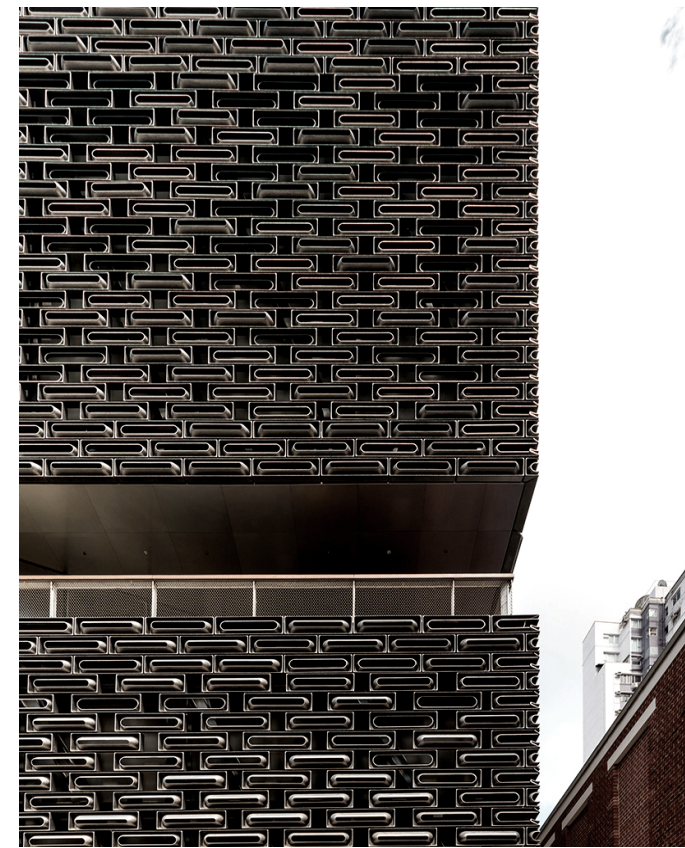
Sarah Ra, AIA, LEED AP
Assistant Professor

urban networks

HONG KONG, SEOUL, TOKYO

Urban networks, both ancient and modern, visible and invisible, establish the movement and growth of the metropolis. Northeast Asian cities have evolved over time in relationship to changing land use, wars, and natural disasters. Many old networks have remained, with new layered in, creating complex development patterns and high densities. We will explore these networks and their impact on contemporary architecture of the city.

Travel to Asia will enable you to visit the cities of Hong Kong, Seoul, and Tokyo with excursions to nearby areas. We will visit both historic and contemporary works of architecture and urban space, while engaging local culture and alternative perspectives. These influences will be unfolded as we explore and analyze urban spaces and their relationship with the rich and diverse societies in which they exist.



TAI KWUN CONTEMPORARY by Herzog & de Meuron

why asia?

The program provides both the HUMANITIES (H) and CONTEMPORARY INTERNATIONAL CULTURES (I) designations, emphasizing the study of contemporary Asian cultures. The course will provide historical reference points, but will focus on how those references and the broader culture have led to developments within contemporary Asian society. For example, the study of the complex, rich, and dynamic history of Hong Kong and the cultural influences of the societies which have shaped it over the last 200 years (Chinese, Japanese, British), and its location as a regional hub, will provide an understanding and backdrop for our area of focus: looking at how these issues have shaped the current city. We will explore issues of urban density and networks, public space, government influence, and climatic and sustainability challenges. How have the cities grown out of these issues, and how do specific contemporary works of architecture reflect these?



KYOTO IMPERIAL PALACE, image by Seung Ra



INDUSTRIAL 07 by Michael Wolf

Expenditure Plan:

- Program costs:	\$ 2,000
- Accommodations (\$60 x 31Nights)	\$ 1,860
- Group Transportation_Air between Cities	\$ 800
- Group Transportation_Ground within Cities	\$ 340
- Activity/Entry Fees	\$ 200

ESTIMATED TOTAL: \$ 5,200

Note: Airfare between US and Asia, food, and other expenses are excluded.



JONGMYO SHRINE, image by Seung Ra

program

Academic Goals

Academic goals related to and enhanced by the program location:

- Provide students with a contemporary, non-western perspective.
- Study a variety of interpretations of dealing with urban issues.
- Study critical examples of current architectural issues, such as resource use and sustainable design, innovative technologies, and impact of climate on built form.
- Develop competency in professional relations within different cultures.

Deliverables

Research paper: Students will embark on research of a chosen contemporary issue to address. Research and written work will be submitted in preparation for travel and expansion of your area of focus through the field study phase, and conclude with the final paper during the retrospective phase.

Analysis: The analysis portion will consist of a journal, photographs, and film footage reflecting analysis of architecture and urban spaces.

Exhibition: The gallery exhibition will reflect the accumulated work of the group, articulating common impressions and issues explored during the course.

Documentary film: Teams will be formed to explore common issues through the lens of film, resulting in a series of documentaries that reveal contemporary issues.

schedule

Preparation Phase

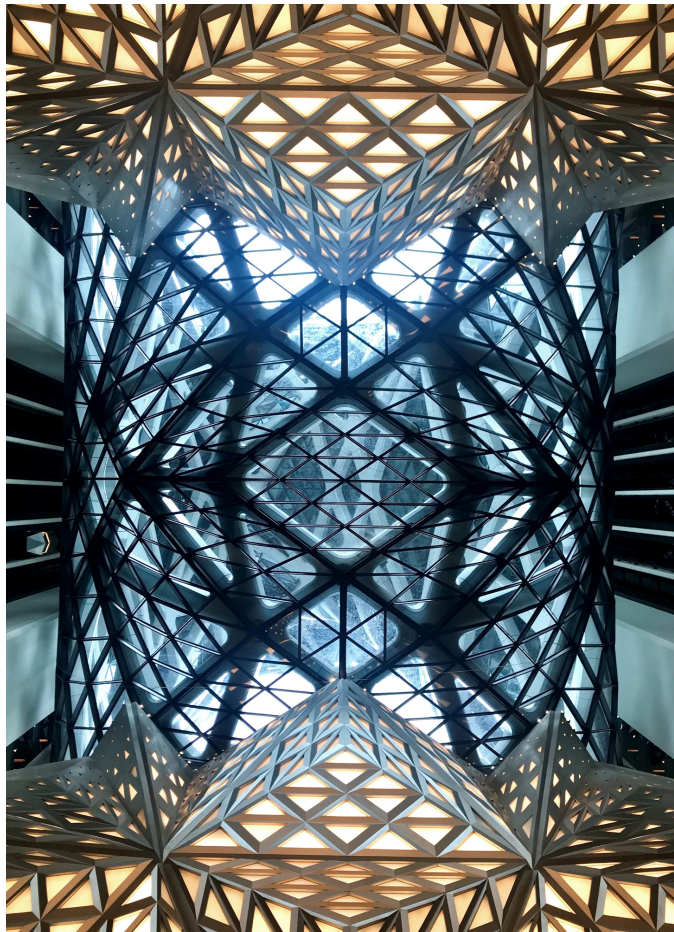
Orientation will consist of a lecture series, introducing you to regional urban and architectural issues, and contemporary and historical works of architecture. **Research** will give you the opportunity to explore and develop an area of focus. **Workshops** will provide interactive opportunities for discussion on topics of film, writing, journaling, and cultural awareness.

Field Study Phase

Approximately ten days will be spent in each major urban location. For each city, our time will commence with an orientation phase and initial group tours. You will then have time to explore while conducting your research and analysis, with group meetings and travel to additional nearby selected locations interspersed throughout. We will conclude our time in each location with a group meeting to reflect and discuss impressions and findings.

Retrospective Phase

The retrospective phase will commence upon return. Students will work independently and in teams to complete the research and accumulate your data and submission materials. The retrospective phase will conclude with a gallery presentation at the beginning of the Fall semester.



MORPHEUS HOTEL by Zaha Hadid Architects, image by Seung Ra