

# Find Your CEAT Major

A degree in engineering, architecture or technology provides the knowledge and tools for problem solving. The work graduates perform will vary depending on the company and industry in which they work. The College of Engineering, Architecture and Technology proudly provides ABET and NAAB accredited degrees for the respective degree programs, allowing our faculty and students to lead the way in design, technology and innovation.

## AEROSPACE ENGINEERING

**Description:** The study of anything traveling through or working in a fluid or gas

### Focus Areas

- Dual Degree with Mechanical Engineering

## ARCHITECTURE

**Description:** The study of the function, design and construction of the sustainable built environment. A five-year NAAB-accredited program

## ARCHITECTURAL DESIGN STUDIES\*

**Description:** The study of architectural design and architectural issues in order to pursue a design-related career outside of professional architectural licensure

### Focus Areas

- Design Management & Leadership
- Design Thinking & Communication
- Design, Cultural, & Urban Studies

## ARCHITECTURAL ENGINEERING

**Description:** The study of engineered systems in architecture through the implementation of fundamental engineering principles

### Focus Areas

- Construction Project Management
- Structures

## BIOSYSTEMS ENGINEERING

**Description:** The study of critical issues related to sustainable food supply, natural resources, energy and health through integration of life and agricultural sciences with fundamental engineering principles

### Focus Areas

- Bioprocessing & Food Processing
- Environment & Natural Resources
- Machine Systems & Agricultural Engineering
- Pre-Medical

## CHEMICAL ENGINEERING

**Description:** The study of processes to produce, transform, separate and transport materials

### Focus Areas

- Pre-Medical
- Biomedical

## CIVIL ENGINEERING

**Description:** The study of infrastructure and the environment it affects

### Focus Areas

- Environmental Engineering

## COMPUTER ENGINEERING

**Description:** The study of hardware-software integration and hardware design with foundations in computer science and electrical engineering

### Focus Areas

- Dual Degree with Electrical Engineering
- 4+1 accelerated Master's program
- Software Engineering

## CONSTRUCTION ENGINEERING TECHNOLOGY

**Description:** The study of managing and supervising construction projects

### Focus Areas

- Building (vertical focus)
- Heavy (highway or horizontal focus)

## ELECTRICAL ENGINEERING

**Description:** The study of devices and systems which use electricity, electronics and electromagnetism

### Focus Areas

- Dual Degree with Computer Engineering
- 4+1 accelerated Master's program

## ELECTRICAL ENGINEERING TECHNOLOGY

**Description:** The applied study of electrical devices, systems and the design and operation of computers

### Focus Areas

- Computer

## FIRE PROTECTION & SAFETY ENGINEERING TECHNOLOGY

**Description:** The study of reducing loss potential with respect to fire, safety and risk management

## INDUSTRIAL ENGINEERING & MANAGEMENT

**Description:** The study of designing and improving processes that are effective, efficient and safe

### Focus Areas

- 4+1 accelerated MBA program
- 4+1 accelerated Master's program

## MECHANICAL ENGINEERING

**Description:** The study of dynamic systems, heat transfer, design of machines and materials

### Focus Areas

- Dual Degree with Aerospace Engineering
- Pre-Medical
- Petroleum

## MECHANICAL ENGINEERING TECHNOLOGY

**Description:** The applied study of mechanical design, mechanical power and manufacturing

## MECHATRONICS & ROBOTICS\*\*

**Description:** The applied study of interface theory, actuation systems, hardware and software integration, modeling, and controls

# CEAT Admissions

## Freshman Admission Requirements

At Oklahoma State University, we're committed to helping qualified students be admitted to OSU to begin earning their college degrees. Check out our admission options below to see how you can become an OSU Cowboy. Please note that some academic colleges may have additional **program-specific admission criteria**.

Students qualify for assured admission if they meet **ONE** of the following criteria:

- 3.0 GPA or better unweighted cumulative **AND** top 33.3% rank in high school graduating class, **OR**
- 3.0 GPA or better in 15-unit core **AND** 21 ACT/1060 SAT or better, **OR**
- 24 ACT/1160 SAT or better



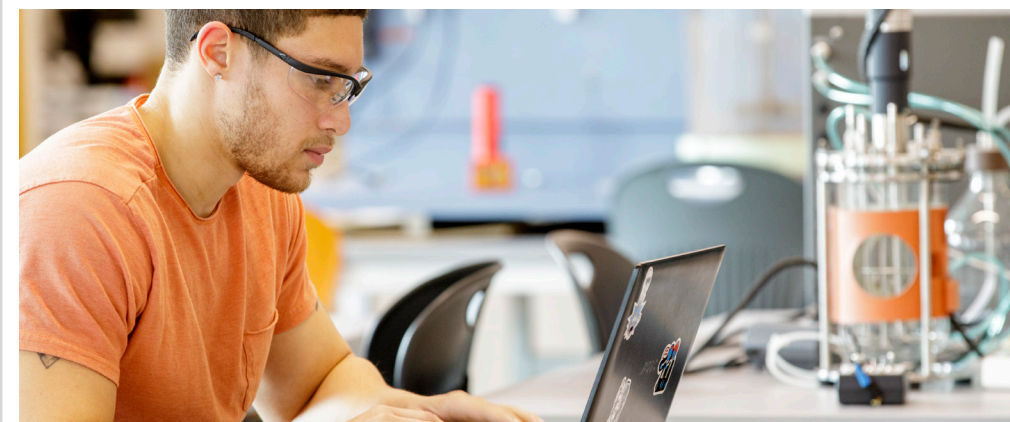
## Transfer Admission

A transfer student is one who has attempted a minimum of 7 semester hours of college-level credit after graduation from high school. Please note that some academic colleges may have additional **program-specific admission criteria**.



Credit Hours Attempted*	Admission Requirements
7-23	Freshman admission requirements and 2.25 GPA
24-59	2.25 GPA
More than 60 or an associate degree	2.25 GPA

\*excluding incomplete, passing grades (ex: "P" or "S"), remedial/developmental, repeated/forgiven credit and activity courses.



## OSU Admission Application Requirements

- Completed OSU admission application
- \$40 nonrefundable application fee or a waiver
- Official high school transcript
- Test scores if an ACT/SAT has been taken
- **For full scholarship consideration you must also complete the leadership and involvement resume portion of the OSU admissions application**

## CEAT Laptop Specifications

Review the various laptop requirements needed per specific CEAT major. Visit [ceat.okstate.edu/itservices/computer\\_services.html](http://ceat.okstate.edu/itservices/computer_services.html)



## Connect With Us

CEAT Prospective Student Services

**Call: 405.744.5279**

**Text: 405.467.1796**

**Email: [ceat.recruitment@okstate.edu](mailto:ceat.recruitment@okstate.edu)**

## Daily CEAT Tours

Scan here to sign up for a tour of your desired major



\*Accreditation not available

\*\*New degree with accreditation in process

**STAY CONNECTED**   

ALL SOCIALS @OSU\_CEAT // INSTAGRAM @NewCEATCowboys



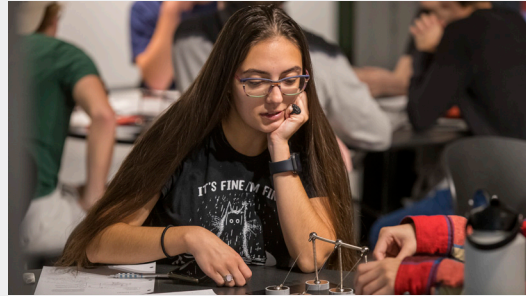
COLLEGE OF  
**ENGINEERING, ARCHITECTURE  
AND TECHNOLOGY**



COLLEGE OF  
**ENGINEERING, ARCHITECTURE  
AND TECHNOLOGY**



# Join the College of Engineering, Architecture and Technology at OSU!



## About Us

The College of Engineering, Architecture and Technology (CEAT) is dedicated to educating and producing engineers, architects and technologists that create solutions to challenges that affect our communities, nation and world. CEAT provides programs that foster hands-on learning and interdisciplinary teamwork.

## Why Choose Us?

### 1. LEARN FROM AWARD-WINNING FACULTY

Our nationally recognized faculty engage students in more than \$51 million in research annually where undergraduates can be involved with the research as early as their freshman year. Faculty also take pride in personally teaching nearly every class in the college.

### 2. ACCESS TO STATE-OF-THE-ART FACILITIES

CEAT's facilities at OSU include; AIA-award winning Architecture building, renovated classrooms, Student Excellence Center and ENDEAVOR, a modern, hands-on undergraduate laboratory where students are encouraged to learn through doing.

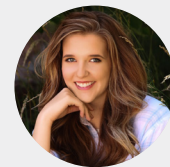
### 3. MAKE A DIFFERENCE IN THE WORLD

CEAT offers students the opportunity to solve grand challenges, introduce STEM to younger generations, find their passion through academic, social and honor organizations, and improve inclusivity. Here, students find many ways to make a difference in the world.



"I arrived at OSU as a transfer student and immediately became a part of the engineering program. Attending OSU had always been a dream of mine, and CEAT welcomed me so warmly that during my initial days here, I never felt alone. The faculty and staff were incredibly supportive, assisting me with my financial, academic, and even personal needs. I am passionate about my program, and the CEAT community has significantly contributed to my growth here. I am immensely grateful to OSU CEAT for transforming my life in the best possible way."

Daisey Rosas - Civil Engineering



"Transferring to CEAT at OSU was undoubtedly the best decision I've ever made. This close-knit community has offered me an exceptional education, lifelong friendships, and cherished memories. It's a place where personal growth, academic excellence, and lasting connections come together, creating a special and fulfilling college experience."

Kaitlin Kavelec - Mechanical Engineering



"I chose OSU CEAT for two main reasons. The first reason is to gain hands-on experience in world-class facilities. OSU CEAT has state-of-the-art facilities that give students access to a wide range of resources to prepare them for full-time employment. The second reason is the intern/job opportunities that are available after graduating with an OSU CEAT degree. OSU CEAT sponsors a career fair each semester with hundreds of companies in attendance. This serves as an outstanding opportunity for early career networking and a wide range of career opportunities."

Cody Seals - Fire Protection & Safety Engineering Technology



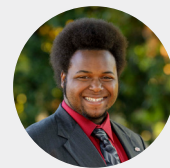
"I chose OSU CEAT because I wanted the ability to explore multiple areas in engineering whether it was plasmonic analysis or dynamics and controls. Out of the many available options, I chose to conduct research on propulsion and power!"

Alexander G. Turner Camacho - Aerospace Engineering



"OSU CEAT has so many opportunities and ways for me to get involved, whether it's through CEAT Student Council, Society of Women Engineers, CEAT Scholars, or being an ambassador for the college itself. Being a part of organizations I'm passionate about is important to me because it's how I make friends, meet new people, and have fun while learning!"

Lenna Abouzahr - Electrical and Computer Engineering



"From the time you step on campus, CEAT is here for you through all aspects of your education and career. The resources they provide, from CEAT Summer Bridge to CEAT Career Services, set you up for success. Not only that, but the relationships you gain through helping one another through the rigors of coursework are truly lifelong. You will not regret choosing CEAT."

Adonis Gardner - Chemical Engineering

# Scholarships

PROGRAM	REQUIREMENTS	CEAT SCHOLARSHIP VALUE*	DESCRIPTION	DEADLINE
<b>CEAT SCHOLARS PROGRAM</b>	3.5+ GPA and 31+ ACT/1390+ SAT, complete short answer leadership question and interview with CEAT faculty.	\$15,000 4 yr total package	4 yr. award with \$3,000 annual scholarship, paid enrichment and travel. Up to 100 selected annually. Qualified for OSU assured awards.	Nov. 1
<b>W.W. ALLEN SCHOLARS PROGRAM</b>	32+ ACT/1420+ SAT and 3.75 GPA (unweighted), Demonstrated leadership, majoring in engineering, complete additional essay questions on the student application portal and interview.	\$110,000 4 yr total package	4 yr. award with \$10,000 annual scholarship, paid enrichment and travel + Full tuition and housing for a Master of Philosophy at the University of Cambridge in the UK. Two selected annually. Qualified for OSU assured awards.	Nov.1
<b>W.W. ALLEN BOYS &amp; GIRLS CLUB SCHOLARS PROGRAM</b>	Preference given to students with a 3.0+ GPA and an active Boys and Girls Club member and/or volunteer with demonstrated leadership. Complete additional essay questions on the student application portal and interview. Must major in a degree within the College of Engineering, Architecture and Technology	\$60,000 4 yr total package, plus the cost of international travel experience	4 yr. award with \$15,000 annual scholarship. Admitted into the CEAT Scholars Program. 10-12 day international travel experience. Participation in designated leadership and teamwork development activities.	Feb. 1
<b>STEM SCHOLARSHIP</b>	3.25 GPA (unweighted) Involvement in STEM Academy, PLTW, or Pre-Engineering courses, majoring in engineering. Must submit a letter of recommendation on the student application portal.	\$10,000 4 yr total package	4 yr. award starting at \$1,000 and increasing by \$1,000 each year, totaling \$10,000. Up to 15 selected annually. Qualified for OSU assured awards.	Feb. 1
<b>FIRST ROBOTICS</b>	3.25 GPA (unweighted), involvement in FIRST Robotics, majoring in engineering and must submit a letter of recommendation on the student application portal.	\$1,000	One year scholarship available to 20 freshman recipients each year. Qualified for OSU assured award.	Feb. 1
<b>FRESHMAN RESEARCH SCHOLARS</b>	3.5 GPA (unweighted), motivated, intellectually curious and have a strong work ethic. Submit additional information on the student application portal.	\$1,000	OSU & CEAT partnered scholarship providing 24 CEAT freshmen the opportunity to engage in cutting-edge research under the guidance of faculty researchers. Qualified for OSU assured awards.	Feb. 1
<b>ACADEMIC DEPARTMENT SCHOLARSHIPS</b>	Based on major indicated on OSU admission application, selection may be based on test scores, GPA, leadership and community service.	Varied by CEAT & Departments	Value & terms vary by donor criteria. Over 200 incoming freshman selected each year.	Feb. 1

\*All CEAT scholarships are competitive & can stack with all OSU assured awards.

\*\*OSU assured awards are guaranteed partial tuition waivers given by the university. Visit [go.okstate.edu/scholarships-financial-aid](http://go.okstate.edu/scholarships-financial-aid) to verify requirements.

	UNDERGRADUATE ESTIMATED DIRECT COST	TUITION & FEES	ROOM & BOARD	BOOKS & SUPPLIES
2025-2026	IN-STATE	\$13,920	\$9,800	\$1,200
	OUT-OF-STATE	\$29,440	\$9,800	\$1,200
	INTERNATIONAL**	\$29,440	\$9,800	\$1,200

\*These estimates are based on 30 credit hours per year. Actual cost may vary.

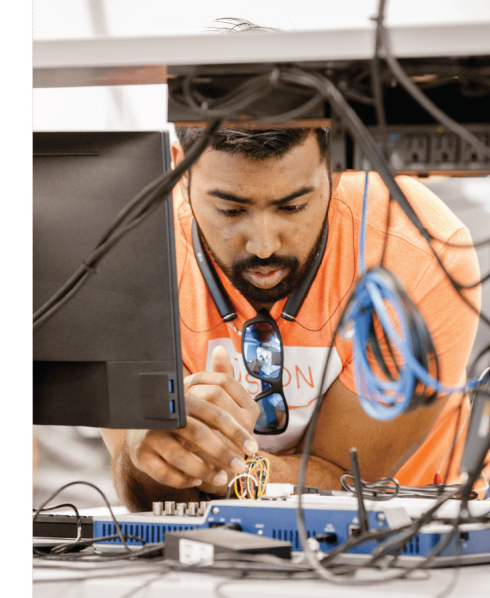
\*\*International estimated direct cost also includes insurance at \$1,851

Ranked

# 111

best engineering school program

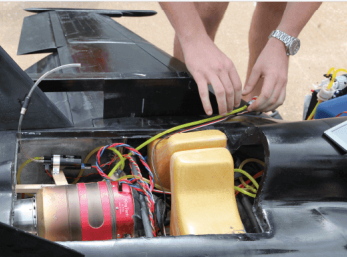
US News & World Report



## FAST FACTS

Average CEAT scholarship

# \$2,287



OSU ranked

# BEST VALUE

public university in Oklahoma

US News & World Report

# \$4 MILLION

in CEAT scholarships awarded



# 60

CEAT student organizations

&

# 12

competition teams

# ENDEAVOR

The nations premier undergraduate multidisciplinary lab and innovation hub.

## Summer Bridge Prepare for success

Transition from high school to the academic rigors of OSU coursework by applying to attend CEAT Summer Bridge. A three-week residential, on campus, preparatory program focusing on academic preparation, mock exams, orientation seminars and engineering design projects. Participation allows students to potentially receive additional scholarships based on performance. Apply by Feb. 1. Discover more at [summerbridge.okstate.edu](http://summerbridge.okstate.edu).

## Parker Hall Enrich your life

Take advantage of our dedicated Living Learning Program (LLP) in Parker Hall. The recently renovated residence hall features traditional style living with specialized services and programs designed to connect engineering, architecture and technology students with like-minded peers and upper-class mentors. LLP applications open December 1. Housing applications open Feb. 1. Discover more at [reslife.okstate.edu](http://reslife.okstate.edu).

## Study Abroad Expand your horizons

CEAT values a global education and offers short-term CEAT faculty-led study abroad courses, international service through Engineers Without Borders and long-term study abroad opportunities. Visit Australia, Germany, The Netherlands, France, Italy, Greece and Mexico. CEAT makes global travel affordable and attainable by providing study abroad scholarships. The options to expand your horizons are truly endless! Discover more at [ceatstudyabroad.okstate.edu](http://ceatstudyabroad.okstate.edu).